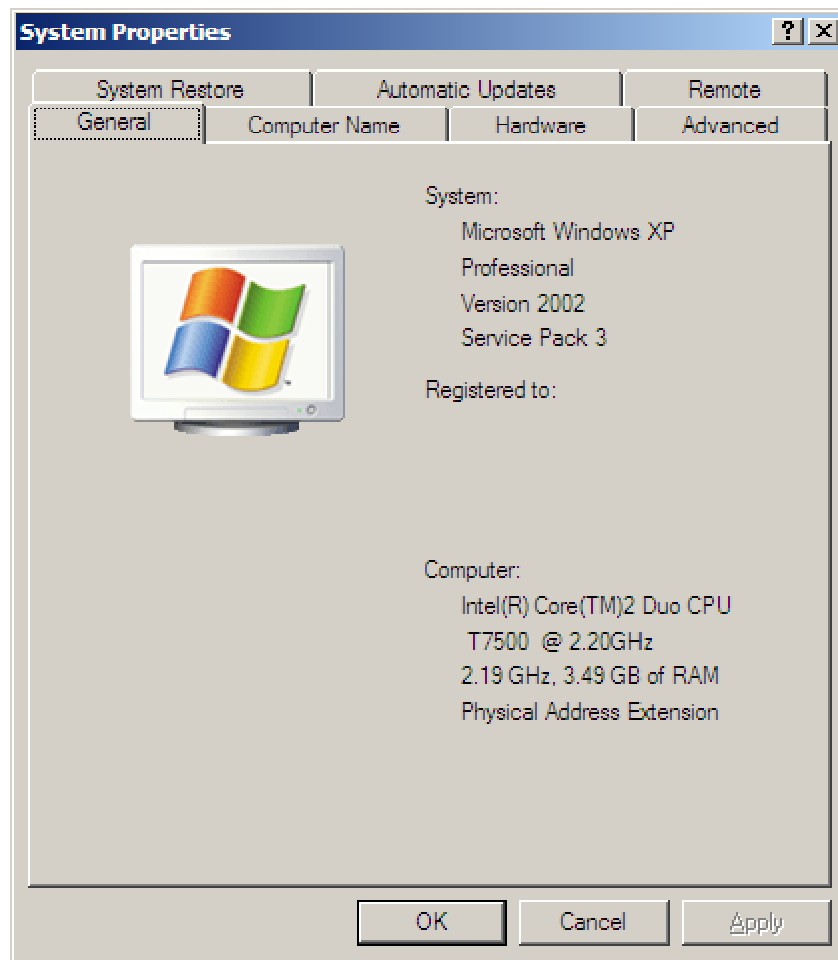


Increasing your virtual memory (paging file) with Windows XP

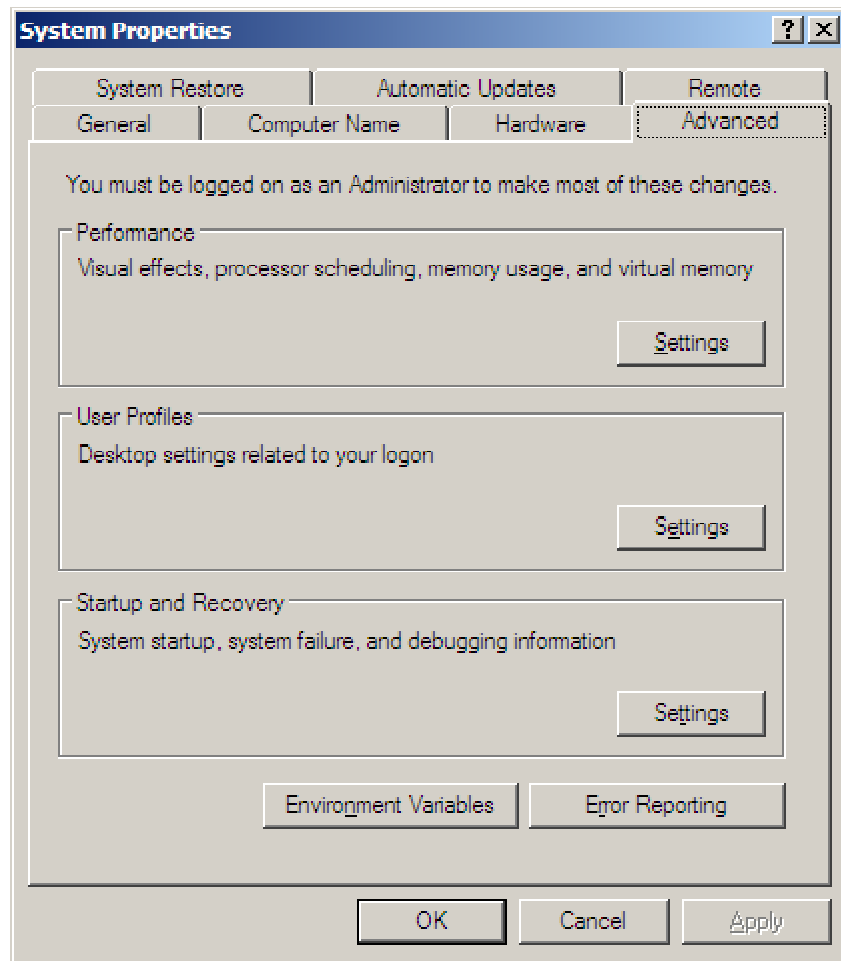
In many operating systems you can use free disk space (which is typically in a abundance) to emulate RAM. It's obviously not as beneficial as physically adding more RAM to your machine, however here is a brief guide to customising your virtual memory configuration using Windows XP.

- Press the **Windows Key + Pause|Break** key to open the **System Properties** windows (there are many ways to do this!)



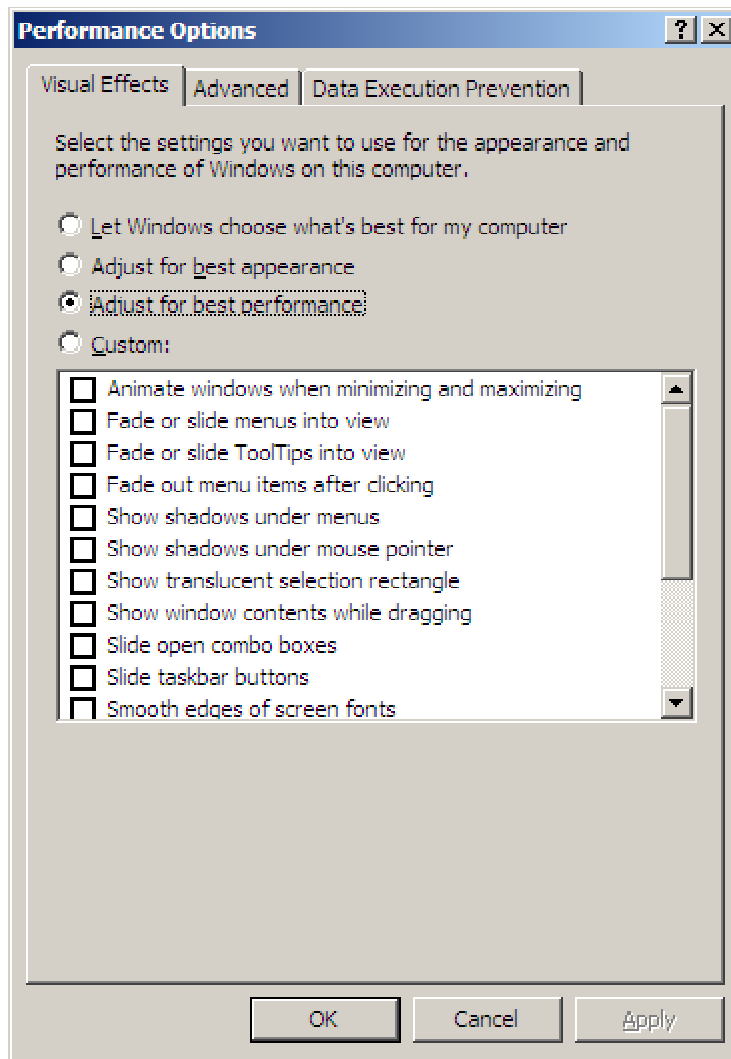
System Properties

- Click on the **Advanced** tab.
- Click on the **Settings** button (under the **Performance** section).



System Properties - Advanced Tab

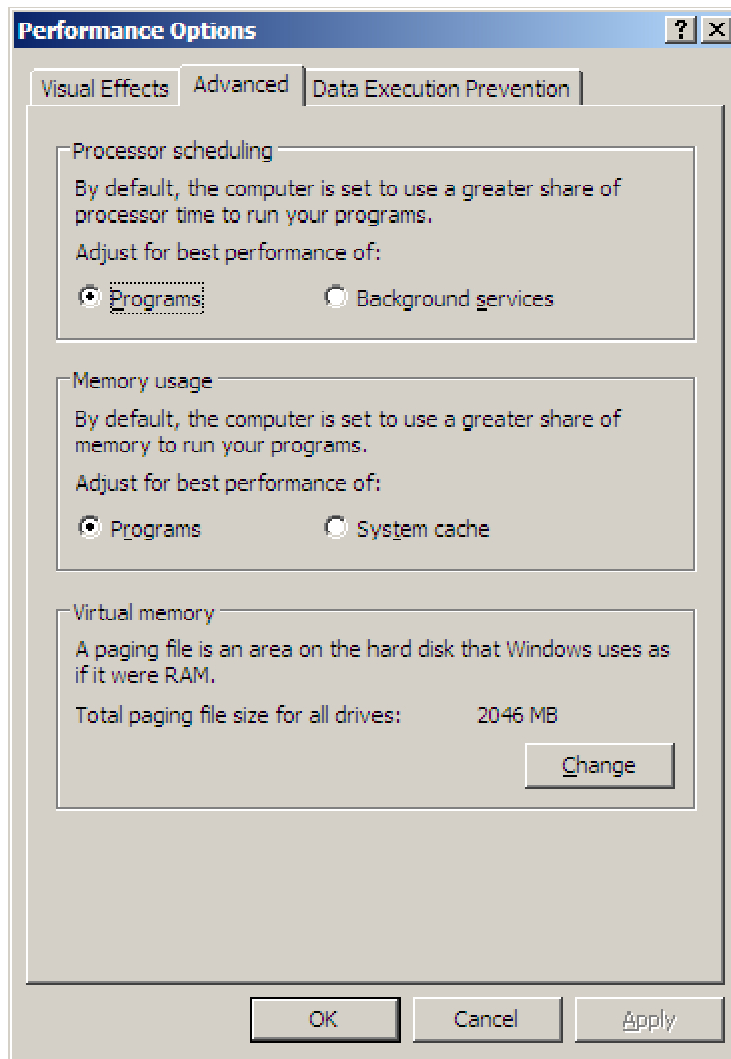
- Click on the **Advanced** tab.



Performance Options

- Under the **Virtual memory** section, click on the **Change** button.

You might like to change the **Processor scheduling** and/or **Memory usage** to suit your needs.



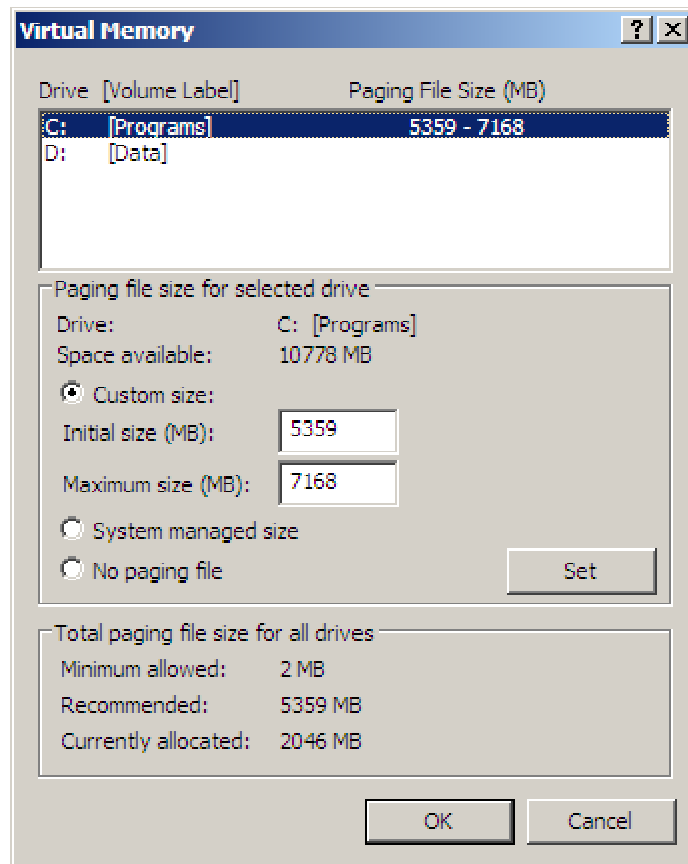
Performance Options - Advanced Tab

- Select the **Custom size** radio button.

A good rule of thumb (well, my rule of thumb) is to set the **Initial size (MB)** to one-and-a-half times (1.5x) your actual RAM, the **Maximum size (MB)** to twice (2x.) This can be determined from the initial **System Properties** section.

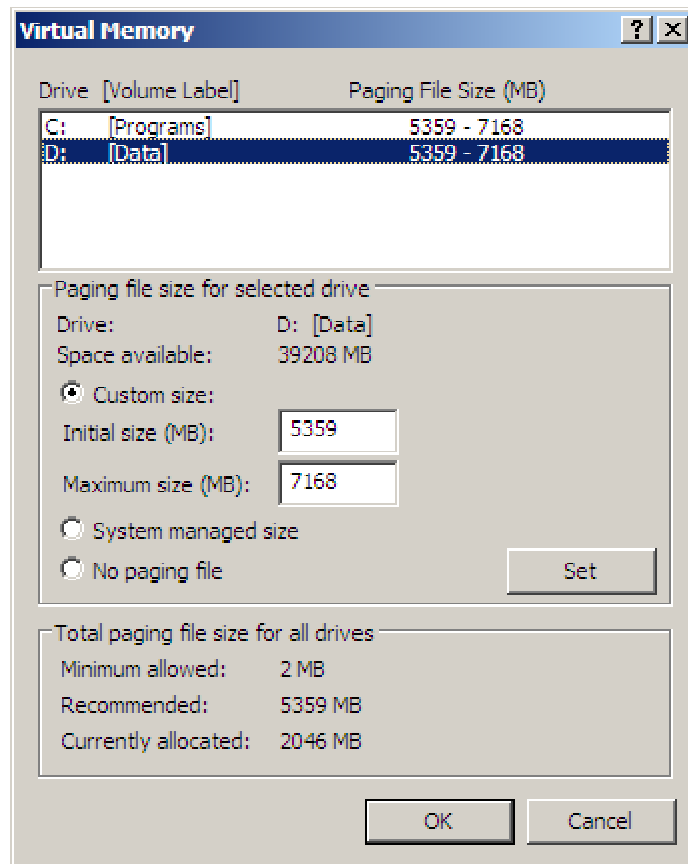
In my case, I have 3.49Gb of reported RAM. Assuming 1024Mb == 1Gb then this is equivalent to approx. 3574Mb. Multiplying this by one-and-a-half (1.5x) equals 5361Mb (which is approx. equal to the Windows recommended 5359Mb.) Similarly, twice (2x) this value is 7148Mb (which is approx. equal to the used value of 3.5Gb x 1024Mb x 2 = 7168Mb).

- Click the **Set** button.
- Click the **OK** button.



Virtual Memory - Primary (C:) Drive

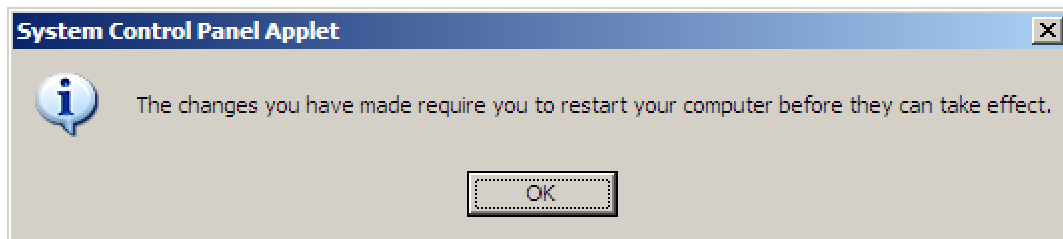
You can set the swap or virtual memory paging file on as many drives as you like - perhaps one that is not written to often in case this results in resource competition. This is an assumption I've made, so may not actually make a difference.



Virtual Memory - Secondary (D:) Drive

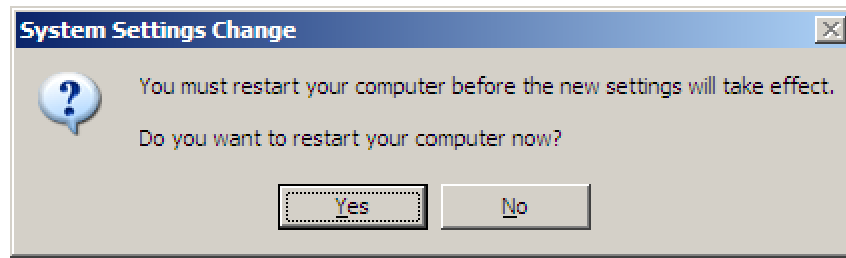
- Continue clicking the **OK** button until you have exited all windows.

You will be notified that the changes will not take affect until you restart your computer.



System Control Panel Applet

You can restart now, or defer restarting until later.



Systems Settings Change

I believe that there are physical RAM limits (4Gb?) with 32-bit Operating Systems like Windows XP, however admit that I don't know enough about the mechanics of this to be certain how/if it applies here. It might be pointless having a 7Gb paging file (let alone two!) as described above. Comments clarifying this are more than welcome.

Feel free to add any comments. If you require further clarification on any part of this how-to guide, please leave a comment, or you can email me at: ryan@kirgs.com or simply visit my website: <http://businessanalyst.kirgs.com/> and complete the feedback form on the "contact" section. *Ryan Kirgan is a Business Analyst who operates out of Sydney, Australia.*



Business Analyst: Ryan Kirgan